

High-volume serial production of milled/turned components

Compact Japanese milling machines from:

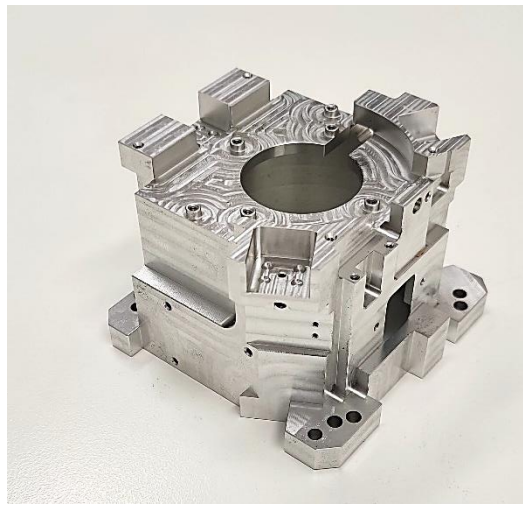
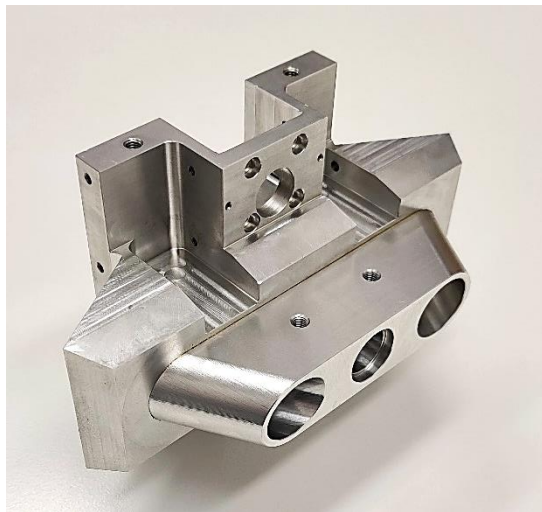
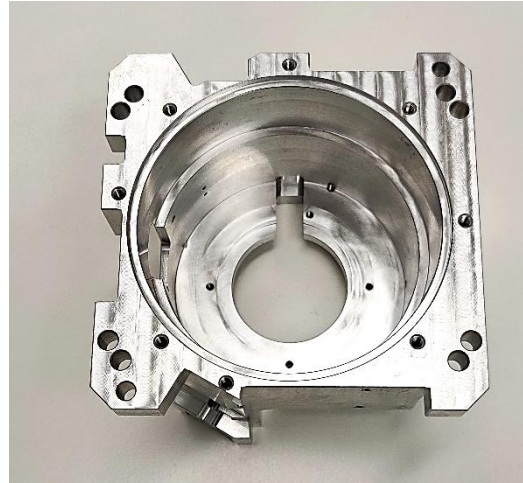
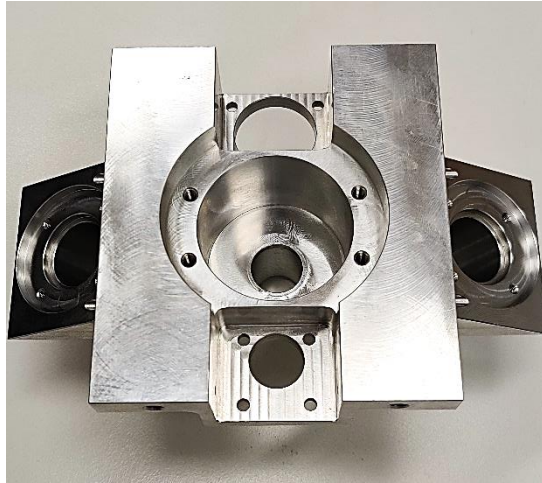
brother®

&

FANUC

- Workpiece size up to $\varnothing 200 \times 200$ mm
- Batches starting at 500 pc
- Milling + turning with speeds up to 16.000 RPM
- Precision machining for tolerances up to IT6
- Materials: steel, aluminum, titanium, stainless steel, brass
- Robotic loading systems







Workpiece name EV motor frame



Workpiece name Hub bearing



Workpiece name Air conditioner scroll



Workpiece name Constant-velocity joint



Workpiece name Artificial bone parts



Workpiece name Valve cylinder

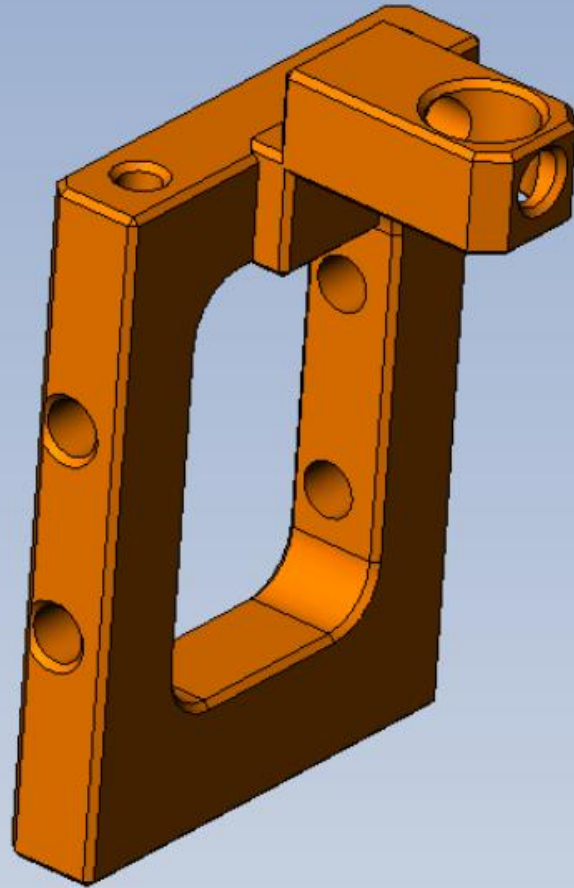


Workpiece name Piping parts



Workpiece name Cross roller





Case study:

Part name - Plate

Material - EN AW 5083

Surface finish - Ra 3.2 um

Precision class - IT6 (0.01 mm)

Machining time:

Before - 12 min

After - 7 min



**previously fastest available in Stevila*